

What to Expect After a Procedure

You may be anxious to know if your loved one's treatment has been successful. Following a procedure, patients will continue to be monitored in the hospital intensive care unit. Please be prepared to wait three to four hours before you are able to see your family member and understand the result of the treatment.

Recovery from stroke depends on many factors, such as where in the brain the stroke occurred, its severity, the age of the patient, and his or her medical history. No two people are affected in the same way.

This procedure is performed by Neurosurgery Endovascular/Cerebrovascular experts at Munson Healthcare as part of our Neurovascular Program. More information is available from the American Stroke Association at stroke.org.

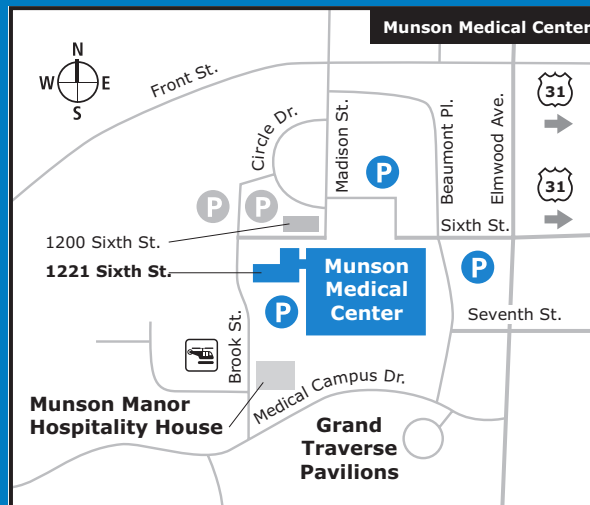
General Questions

Munson Neurosurgery
Office hours Monday - Friday

9 am - 5 pm

231-392-0640

munsonhealthcare.org/stroke



Munson Neurosurgery procedures are performed at:

Munson Medical Center

1221 Sixth St., Ste. 300

Traverse City, MI 49684

231-935-5000

munsonhealthcare.org/stroke



MUNSON HEALTHCARE

1105 Sixth St.

Traverse City, MI 49684

231-935-5000

munsonhealthcare.org

Español (Spanish)

ATENCIÓN: Si habla español, tiene a su disposición servicios gratuitos de asistencia lingüística. Llame al **231-935-6632**.

العربية (Arabic)

ملحوظة: إذا كنت تتحدث أحدى اللغات، فإن خدمات المساعدة اللغوية تتوافر لك بالمجان. اتصل برقم **2366-539-132**.

Neurosurgery

Mechanical Thrombectomy



MUNSON HEALTHCARE



Mechanical Thrombectomy Treatment for Ischemic Stroke

What is an Ischemic Stroke?

An ischemic stroke occurs when an artery (blood vessel) is blocked by a clot and cuts off blood flow to part of the brain.

Symptoms may include numbness or weakness on one side of the body and problems with balance, speech, and swallowing.

Without a blood supply, brain cells can be damaged or destroyed because they may not receive enough oxygen. Two million neurons (brain cells) die per minute during a stroke.

Mechanical Thrombectomy Treatment

Mechanical thrombectomy is the standard of care for sudden ischemic strokes in the brain's large blood vessels. The procedure aims to remove the obstructing blood clot, restore blood flow, and minimize brain tissue damage.

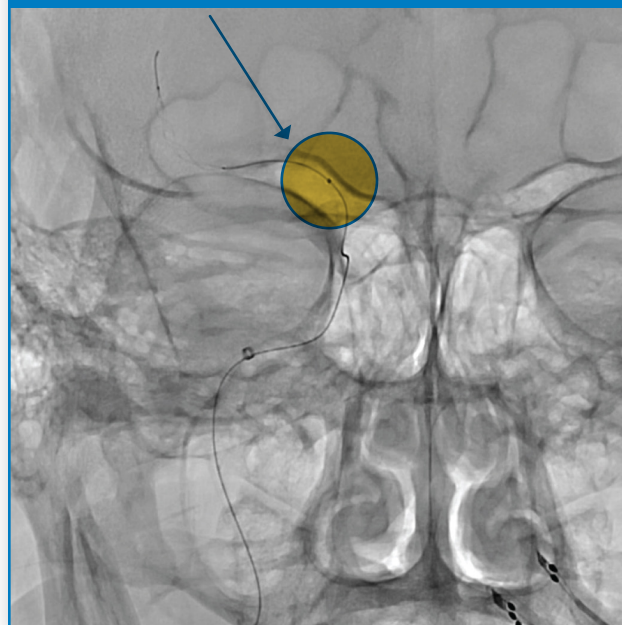
During this minimally-invasive treatment, a specially-trained surgeon threads a catheter through the patient's artery to the blockage. The surgeon then inserts a small stent retriever to capture and remove the clot.

Thrombolysis is an additional drug treatment typically given within four hours of an ischemic stroke to dissolve a clot. Thrombolysis alone is less effective for large blockages and is often provided alongside a mechanical thrombectomy.

Your healthcare team is experienced in managing acute ischemic stroke and will decide if you or your family member are suitable for these treatments.

Bi-plane Brain Imaging

A slight poke is all that's required for your surgeon to insert a catheter and attempt to remove the blockage.



Mechanical Thrombectomy Benefits and Risks

Mechanical thrombectomy procedures have been shown in clinical trials to significantly improve disability-free survival and quality of life when performed within 24 hours of a stroke.

- Patients are 10 to 40 percent more likely to have an excellent or good recovery (still able to care for themselves) at 90 days.
- Up to 40 percent of patients also have less disability overall as compared with those who received other stroke treatments.

The National Institute of Health and Care Excellence (NICE) and the American Heart Association/American Stroke Association recommend this procedure for certain patients up to 24 hours after a stroke event. However, there are risks.

In five percent of cases, a mechanical thrombectomy may cause bleeding into the brain leading to death or more disability. It's important to remember that the overall risk to life would be the same if the patient did not have the procedure.

Other serious but less common risks (less than one percent of cases) include:

- Injury to the groin/wrist artery
- Major bleeding
- Kidney failure

Additional unplanned procedures or treatments are sometimes necessary to save a patient's life or to prevent serious harm to his or her health.



Munson Medical Center is a Primary Stroke Center for northern Michigan and is consistently recognized for care by the American Heart Association. Munson Healthcare is the region's only thrombectomy-capable stroke program.